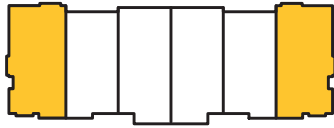


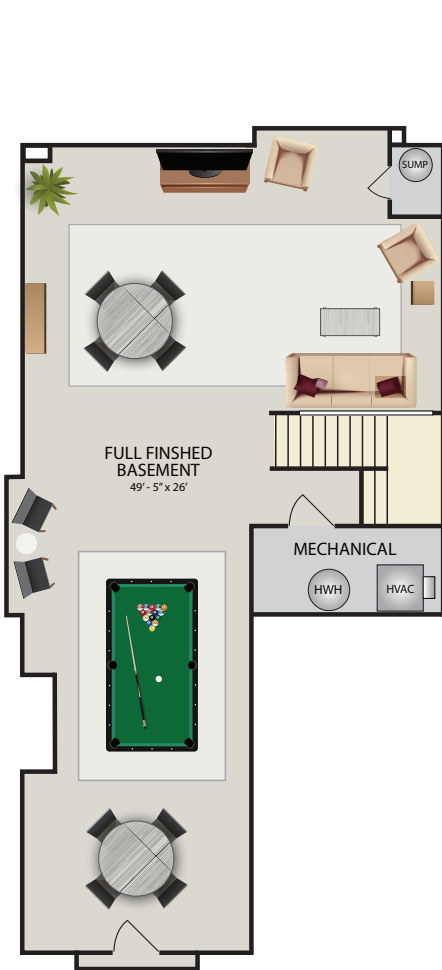
# Diamond

Full Finished Basement

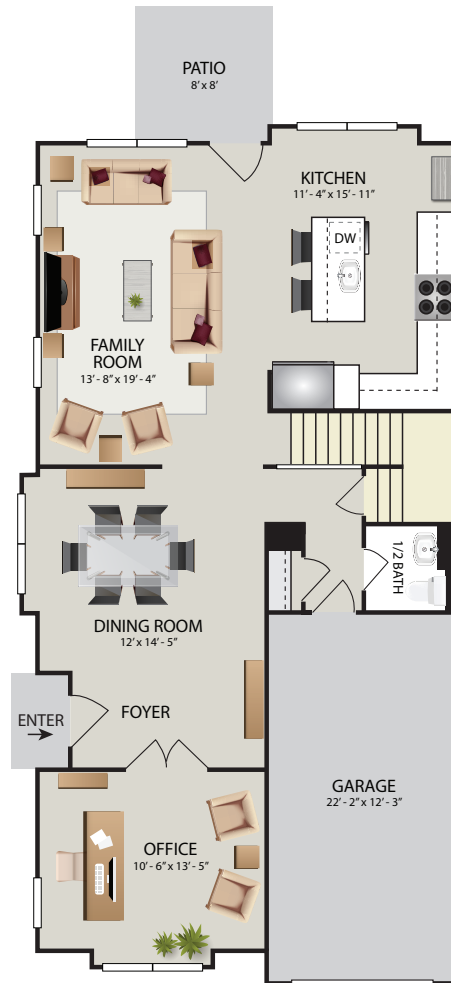
- 3 Bedroom
  - 2.5 Bath
  - Living Space: 2,229 sq. ft
  - Finished Basement: 957 sq. ft
  - Garage: 248 sq. ft.
- 
- Total: 3,434 sq. ft.



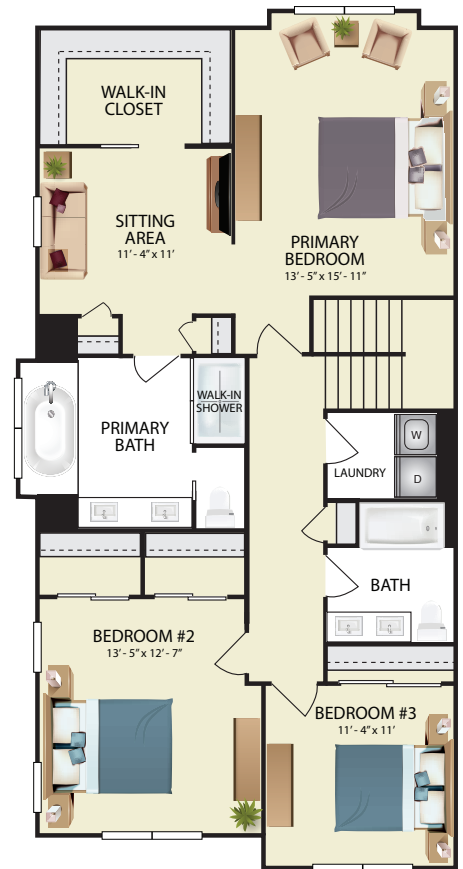
Building Key



BASEMENT



FIRST FLOOR



SECOND FLOOR



Plans and furnishings are for marketing purposes only and are not to scale. All measurements are approximate and may vary from actual unit dimensions. Floor plans, layouts, features, and availability are subject to change without notice. Some images may be virtually staged for illustrative purposes only. Actual locations may vary, and items shown—or omitted—are subject to errors, omissions, and field modifications. This flyer is for informational purposes only and does not constitute a binding agreement. For more details or to discuss modifications for enhanced accessibility, please contact the leasing office.

THE  
KINGSLEY