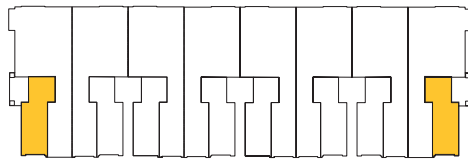


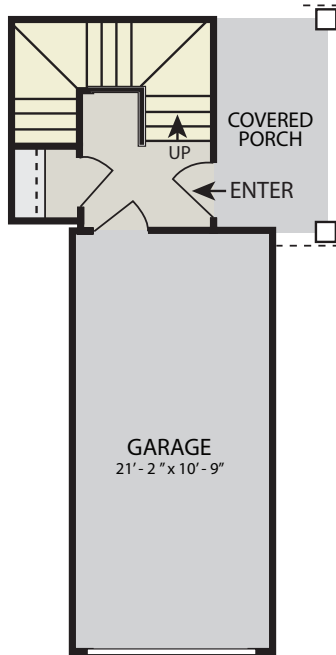
# Pearl

- 3 Bedroom
- 2.5 Bath
- Living Space: 2,064 sq. ft.
- Garage: 239 sq. ft.

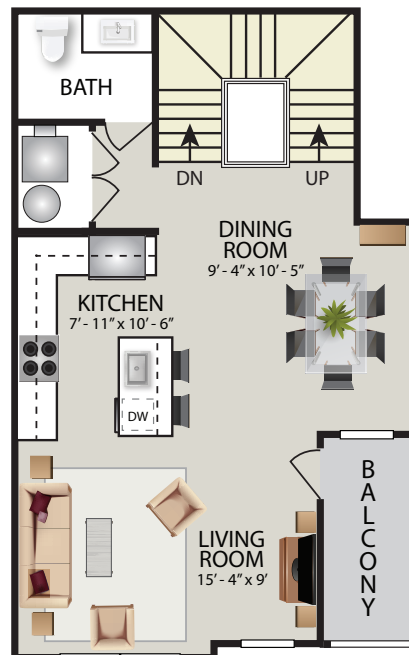
Total: 2,303 sq. ft.



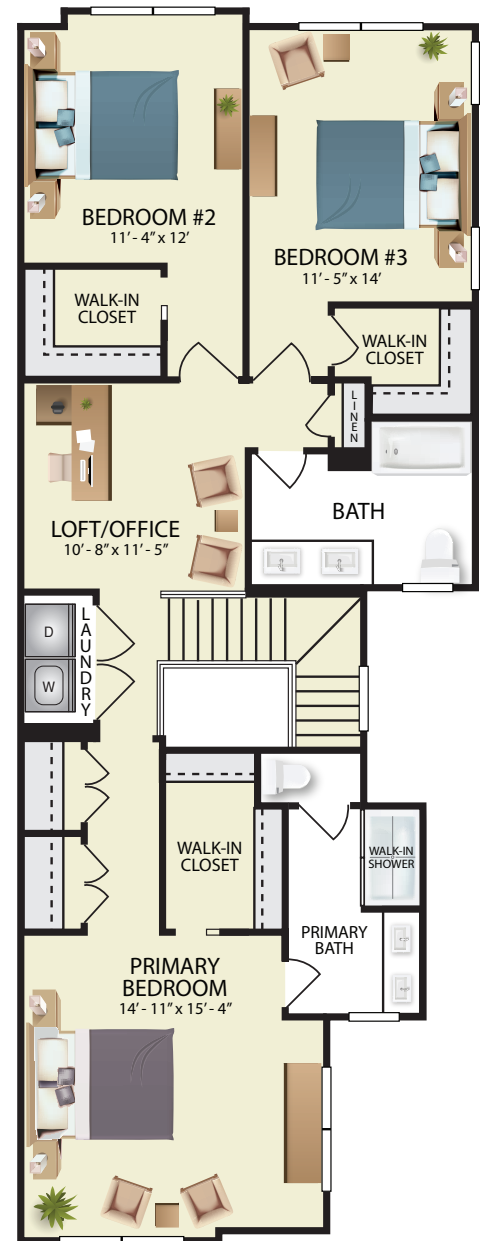
Building Key



FIRST FLOOR



SECOND FLOOR



THIRD FLOOR



Plans and furnishings are for marketing purposes only and are not to scale. All measurements are approximate and may vary from actual unit dimensions. Floor plans, layouts, features, and availability are subject to change without notice. Some images may be virtually staged for illustrative purposes only. Actual locations may vary, and items shown—or omitted—are subject to errors, omissions, and field modifications. This flyer is for informational purposes only and does not constitute a binding agreement. For more details or to discuss modifications for enhanced accessibility, please contact the leasing office.

**THE KINGSLEY**